

# Using the KeyShot 7 Configurator

August 31st, 2017



Rex Roberts

## Before we Begin...

- This will be recorded and posted to [youtube.com/keyshot3d](https://youtube.com/keyshot3d)
- Computer: 2.5GHz dual 12-core (48-thread), 32GB RAM, Windows 10
- KeyShot 7 Pro
- If you have questions...



# Contents

- What is the Configurator?
- Who is it for?
- How does it work?
  - Multi-Material
  - Model Sets
  - Studios
  - Configurator Wizard
  - Presentation Mode
- Demo
- Q&A



# What is the Configurator?

- Brand new **Pro-only** feature for KeyShot 7.
- A tool for presenting **model** and **material variations** on a local computer in real-time for design reviews and interactive consumer experiences.



# What is the Configurator?

A new interactive method for presenting and communicating your products.

## Benefits:

- Explore product variations in real-time.
- Interactively analyze in 360 degrees.
- Platform to quickly make educated design and CMF decisions.



# Who is the Configurator for?

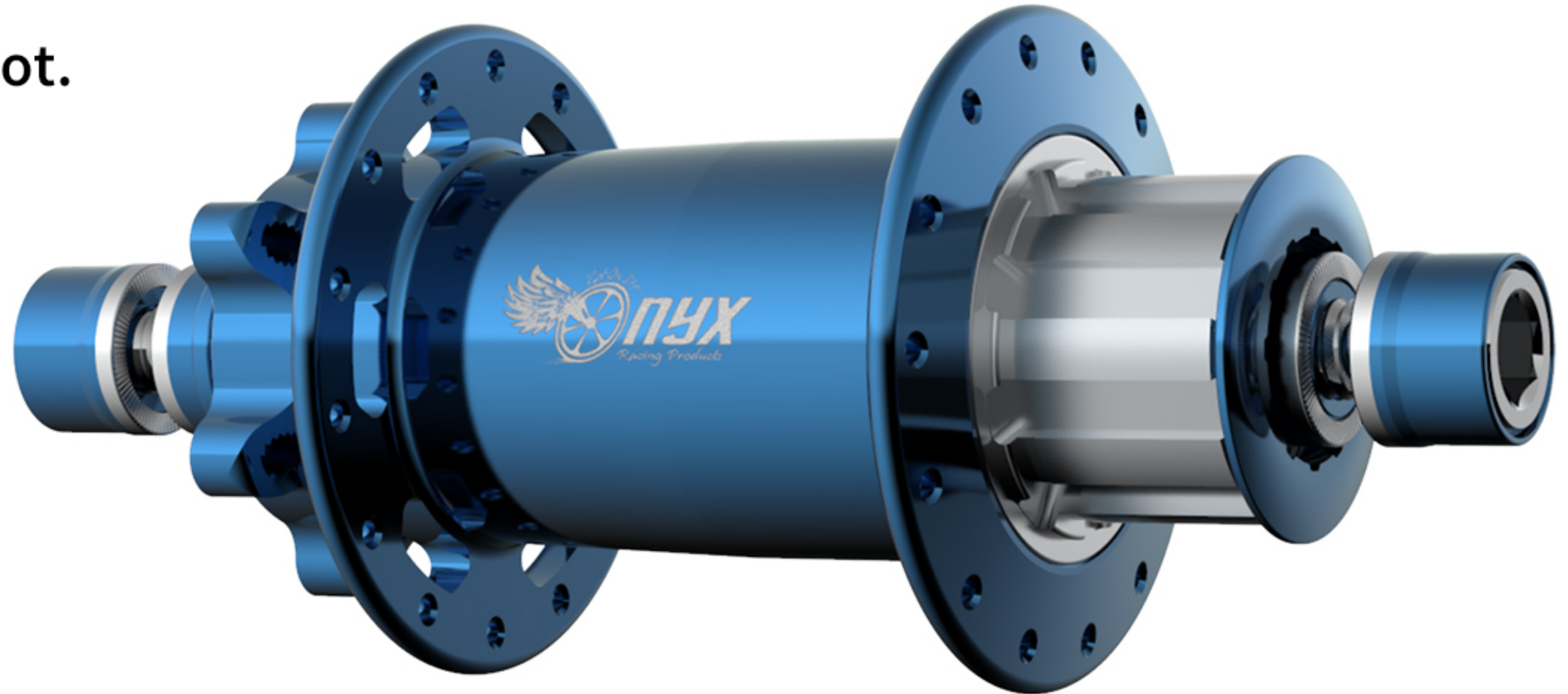
Designers, Product Management, Marketing, Sales, stake-holders, vendors, manufactures, customers.

## Setup:

- KeyShot user with understanding of scene setup.

## End User:

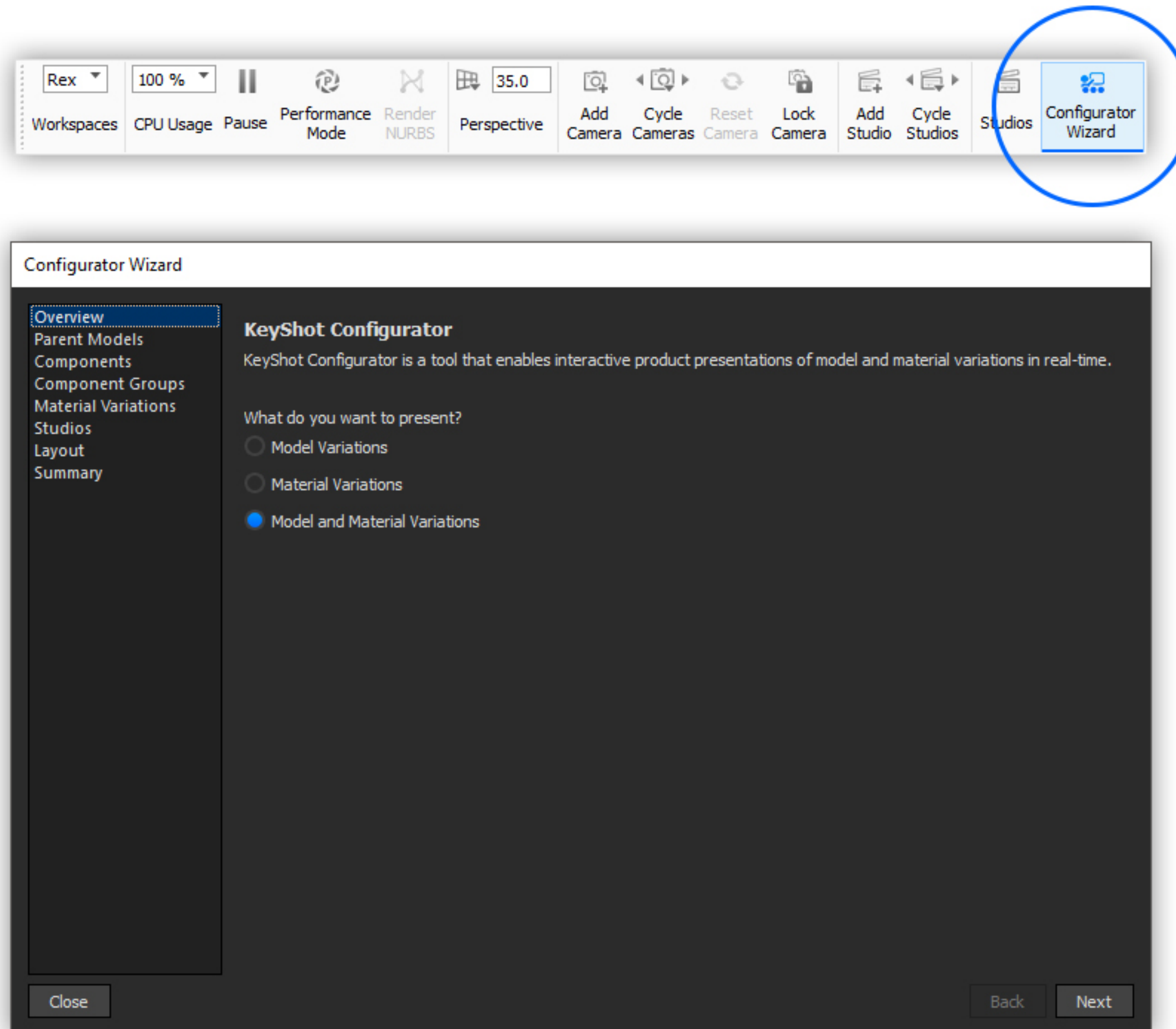
- No required knowledge of KeyShot.



# How does the Configurator work?

The **Configurator Wizard** is a step-by-step walkthrough for Configurator setup.

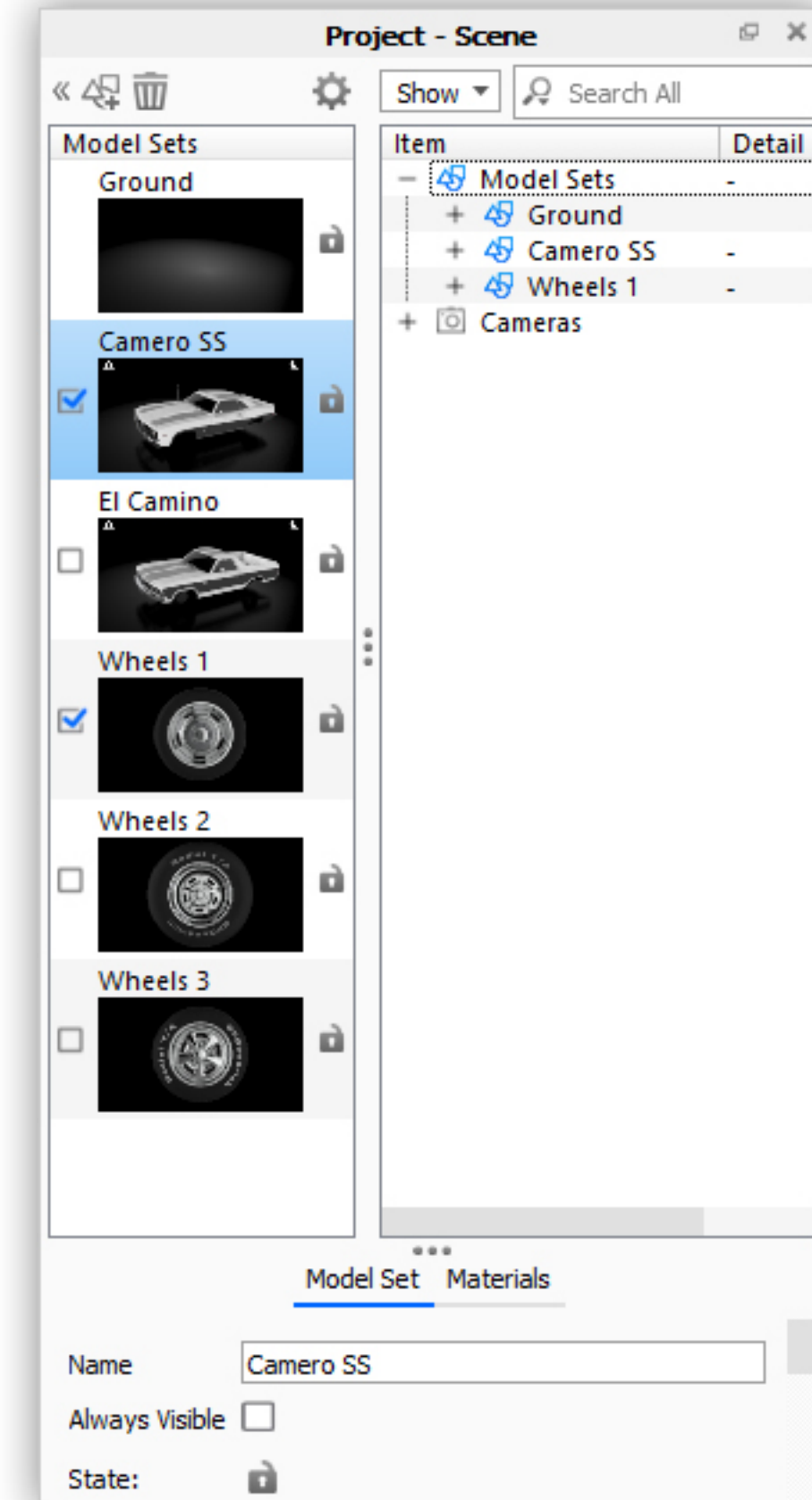
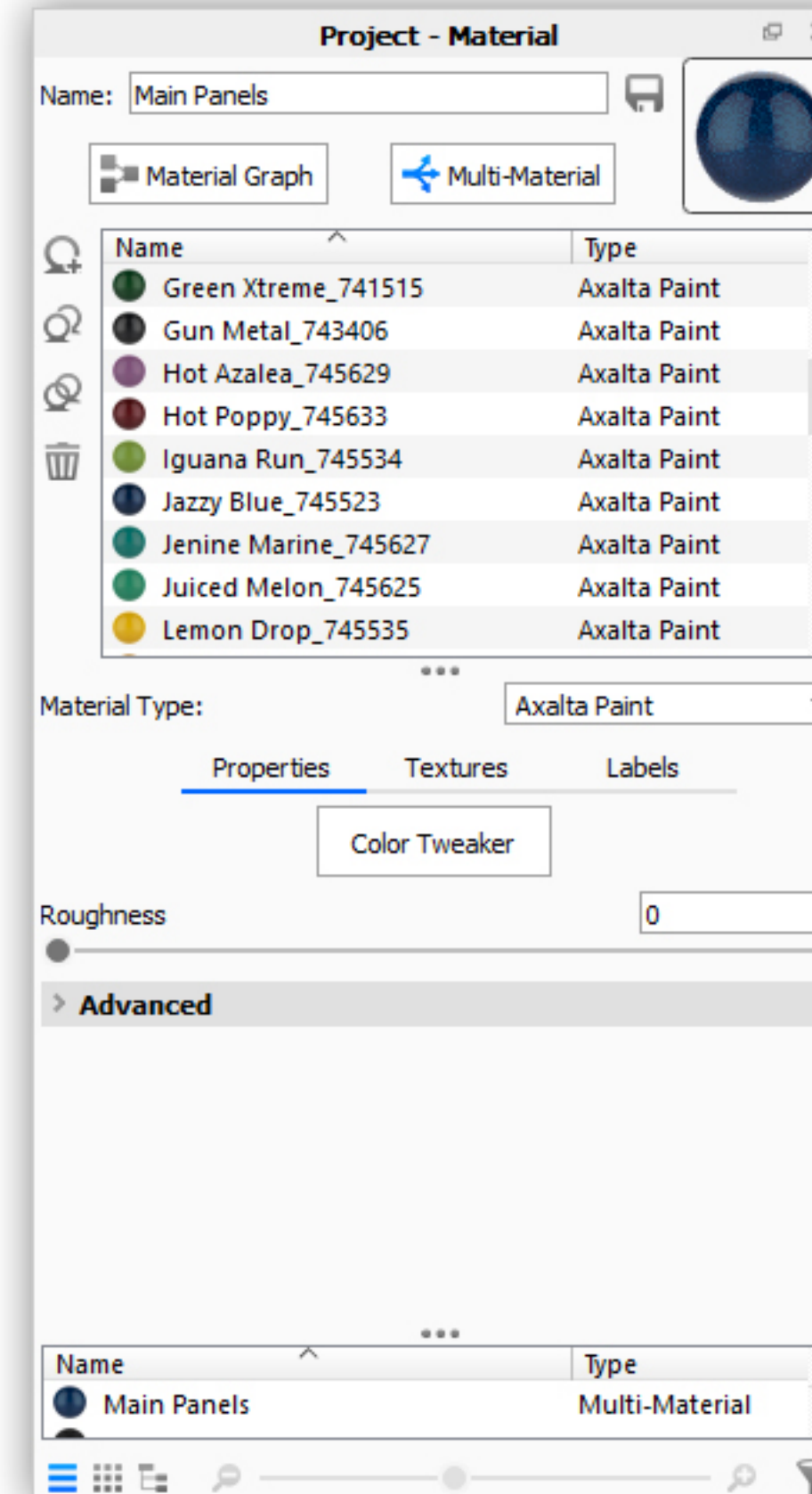
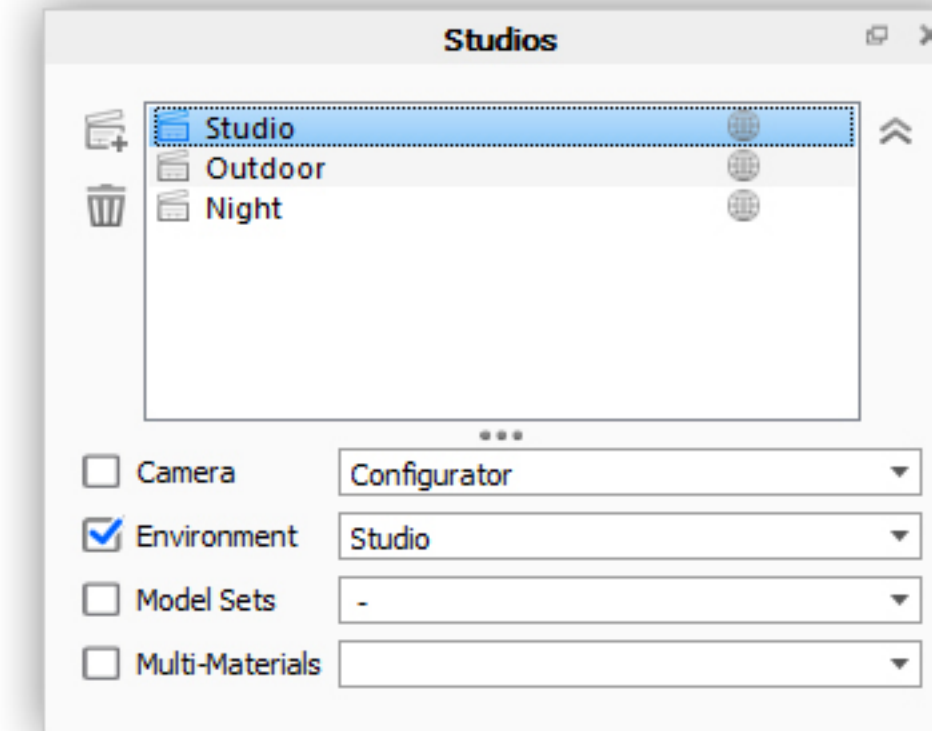
- Accessed through the Ribbon



# How does the Configurator work?

The Configurator has 3 building-blocks:

- **Multi-Material**
  - “Container” for material variations
  - Non-destructive material changes
  - Can share textures/labels
- **Model Sets**
  - Independent Scene Tree variations
  - 1 Model Set per model variation
  - Set to ‘Always Visible’ for i.e. Ground
- **Studios**
  - Combine Cameras/Environments/props



# How does the Configurator work?

Presentation Mode is a touch-friendly full-screen viewing mode.



# Demo